

Technical data sheet



Product features

Model	SAP Code	00000076
BM 60 EL	A group of articles - web	Pasta cookers and Bain Marine



- Drain type: On the front panel
- Drain: Yes
- Safety drain: Yes
- Material: AISI 304 top plate, AISI 430 cladding
- Protection of controls: IPX4
- Maximum device temperature [°C]: 90

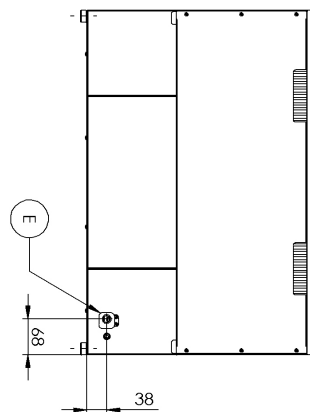
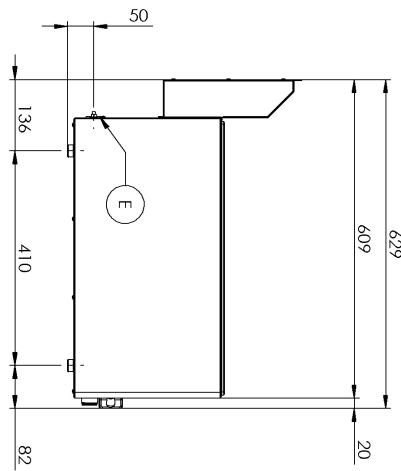
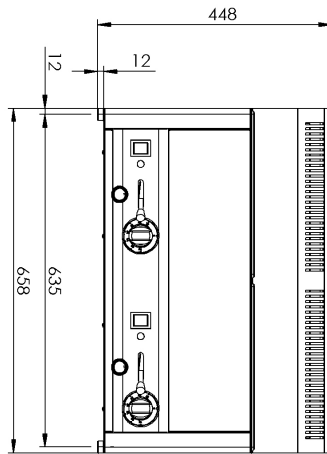
SAP Code	00000076	Power electric [kW]	3.000
Net Width [mm]	658	Loading	230 V / 1N - 50 Hz
Net Depth [mm]	609	Number of GN / EN	2
Net Height [mm]	290	GN / EN size in device	GN 1/1
Net Weight [kg]	20.00	GN device depth	150

Technical data sheet



Technical drawing

Model	SAP Code	00000076
BM 60 EL	A group of articles - web	Pasta cookers and Bain Marine



Technical data sheet



Product benefits

Model	SAP Code	00000076
BM 60 EL	A group of articles - web	Pasta cookers and Bain Marine

1

All-stainless design

- long life
- resistance of AISI 304 stainless steel material
- the material does not cut
 - savings on service interventions
 - easy cleaning and maintenance of equipment

2

Degree of protection of the control elements IPX4

- maintenance-free system
- resistance to splash water
- long life
 - savings on service interventions
 - greater job security for staff

3

Manipulation

- easy portability
 - flexibility in the kitchen, can be used for banquets

Technical data sheet



Technical parameters

Model	SAP Code	00000076
BM 60 EL	A group of articles - web	Pasta cookers and Bain Marine

1. SAP Code:

00000076

2. Article group:

Bain Maries

3. Net Width [mm]:

658

4. Net Depth [mm]:

609

5. Net Height [mm]:

290

6. Net Weight [kg]:

20.00

7. Gross Width [mm]:

725

8. Gross depth [mm]:

710

9. Gross Height [mm]:

540

10. Gross Weight [kg]:

22.00

11. Device type:

Electric unit

12. Construction type of device:

Table top

13. Power electric [kW]:

3.000

14. Loading:

230 V / 1N - 50 Hz

15. Protection of controls:

IPX4

16. Material:

AISI 304 top plate, AISI 430 cladding

17. Indicators:

operation and warm-up

18. Worktop type:

Molded - comfortable cleaning maintenance

19. Worktop material:

AISI 304

20. Worktop Thickness [mm]:

0.80

21. Basin dimensions [mm x mm x mm]:

2x328 x 609 x 290

22. Maximum device temperature [°C]:

90

23. Minimum device temperature [°C]:

30

24. Adjustable feet:

Yes

25. Number of basins:

2

26. Basin material:

AISI 304 - High quality stainless steel

27. Drain type:

On the front panel

28. Drain:

Yes

29. Safety drain:

Yes

30. Number of GN / EN:

2

31. GN / EN size in device:

GN 1/1

32. GN device depth:

150

Technical data sheet



Technical parameters

Model	SAP Code	00000076
BM 60 EL	A group of articles - web	Pasta cookers and Bain Marine

33. Heating location:

Under the bottom of the bathtub