

Technical data sheet



Product features

Model	SAP Code	00003498
PS 2010 L	A group of articles - web	Grills and grill plates



- Top type: Smooth
- Griddle dimensions [mm x mm]: 260 x 240
- Griddle thickness [mm]: 8.00
- Container for liquid fat: Yes
- Independent heating zones: Joint control of top and bottom plate
- Maximum device temperature [°C]: 300
- Surface finish: sandblasted surface without coating

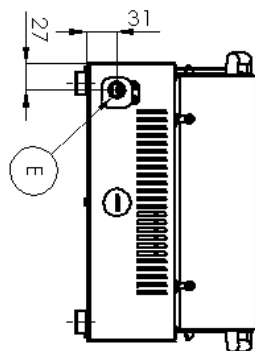
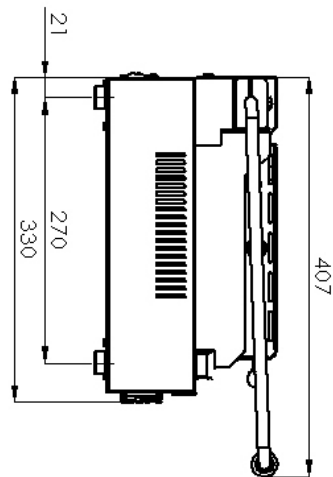
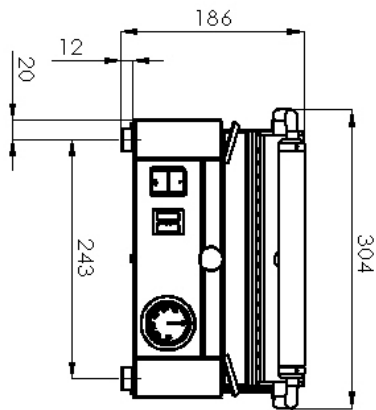
SAP Code	00003498	Power electric [kW]	3.000
Net Width [mm]	304	Loading	230 V / 1N - 50 Hz
Net Depth [mm]	407	Griddle dimensions [mm x mm]	260 x 240
Net Height [mm]	186	Top type	Smooth
Net Weight [kg]	15.00		

Technical data sheet



Technical drawing

Model	SAP Code	00003498
PS 2010 L	A group of articles - web	Grills and grill plates



Technical data sheet



Product benefits

Model	SAP Code	00003498
PS 2010 L	A group of articles - web	Grills and grill plates

1

All-stainless design

only stainless steel intended for food contact is used

- absolutely rust-proof and non-magnetic design
- resists even weak acids easier compliance with hygiene standards (HACCP); easy maintenance and cleaning

2

Run and warm-up light

optical possibility to check the status of the device

- the operator immediately knows what state the appliance is in on/off, heating/not heating

3

Outlet for waste liquids

waste fluid, the fat is no longer burned and drains into the reservoir (drawer)

- the waste liquid (grease) is not burned off and does not flow onto the table or the floor

4

Grill plate with steel alloy 8mm

high thermal conductivity strength stability

- quick heat up the grill plate does not warp or bulge
- faster heating than cast iron
- grills better than stainless steel
- food does not stick to it

Technical data sheet



Technical parameters

Model	SAP Code	00003498
PS 2010 L	A group of articles - web	Grills and grill plates

1. SAP Code:

00003498

2. Article group:

Contact grills

3. Net Width [mm]:

304

4. Net Depth [mm]:

407

5. Net Height [mm]:

186

6. Net Weight [kg]:

15.00

7. Gross Width [mm]:

470

8. Gross depth [mm]:

330

9. Gross Height [mm]:

230

10. Gross Weight [kg]:

16.00

11. Device type:

Electric unit

12. Construction type of device:

Table top

13. Power electric [kW]:

3.000

14. Loading:

230 V / 1N - 50 Hz

15. Protection of controls:

IPX4

16. Material:

Stainless steel

17. Indicators:

operation and warm-up

18. Surface finish:

sandblasted surface without coating

19. Maximum device temperature [°C]:

300

20. Minimum device temperature [°C]:

50

21. Griddle dimensions [mm x mm]:

260 x 240

22. Griddle thickness [mm]:

8.00

23. Container for liquid fat:

Yes

24. Independent heating zones:

Joint control of top and bottom plate

25. Uniform heating:

Yes

26. Top type:

Smooth